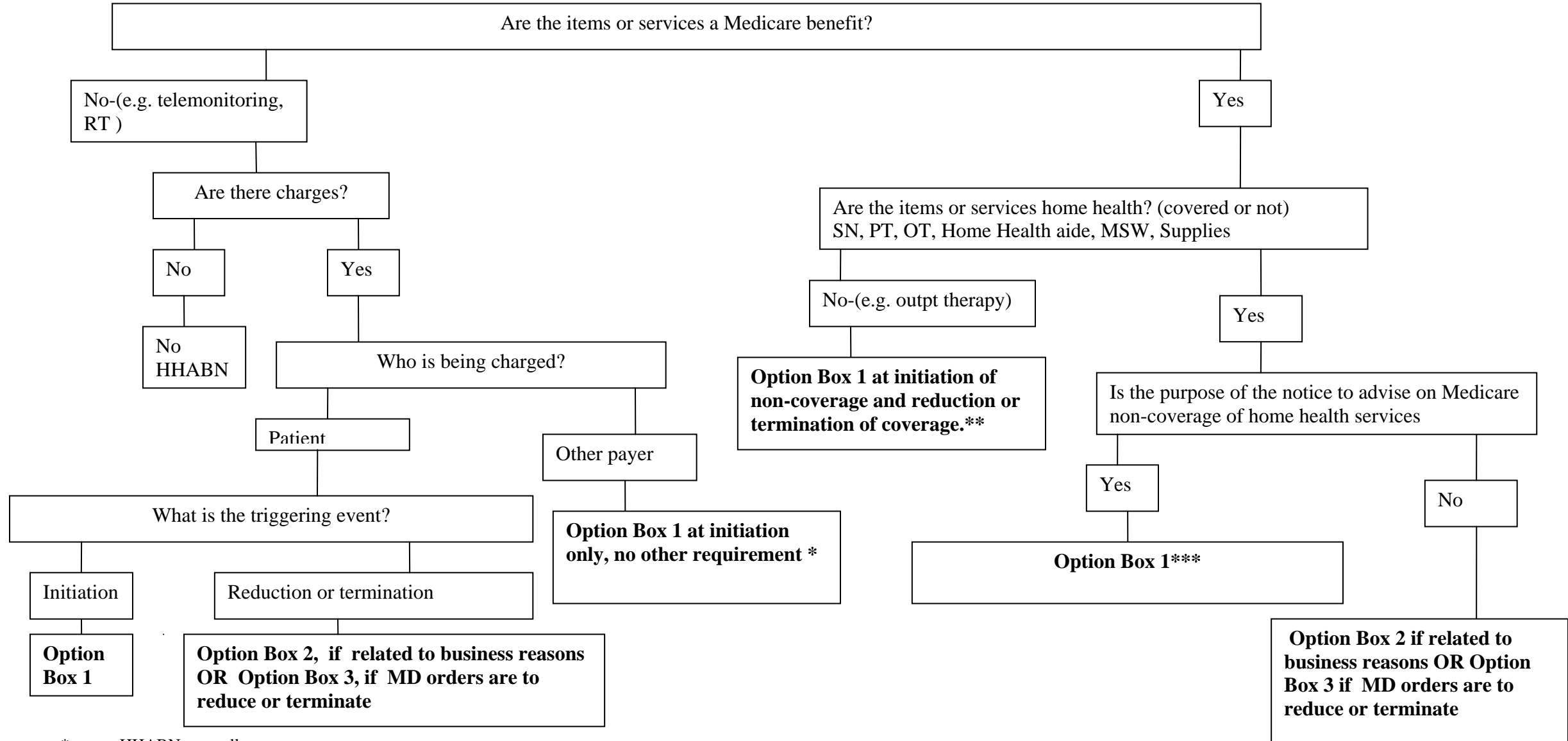


HHABN OPTION BOX DECISION TREE FOR NON-COVERAGE, REDUCTIONS, AND TERMINATIONS OF MEDICAL SERVICES



- * renew HHABN annually
- ** Initiation of non-covered items and/or services; Reductions of some covered or non-covered care while continuing others care; Termination of all Medicare covered care, but expects to continue delivering other non-covered care (an Expedited Determination Notice is to be given when all Medicare covered care ends).
- *** Option Box 1 is to be used when Option Box 2 or 3 do not apply.